



JC WILSON RANCHES

# Hilton Ranch

427+/- Acres • Jack County  
Priced to Sell

Contact Joe Wilson (214) 784-3725) • [jcwilsonranches.com](http://jcwilsonranches.com)





Burwick Road

**Ranch Entrance from Burwick Road**



## General

The 427+/- Acre Hilton Ranch is a hunters paradise with approximately 80% cover that hunts big and holds lots of game. There are several old fields that can be reclaimed and utilized as food plots. The beautiful scenery and water makes this a place for the whole family to enjoy.

## Location

The Hilton Ranch is 8 miles West of Jacksboro on Burwick Road which provides all weather access; and is conveniently located just over an hour from the DFW Metroplex and 40 minutes from Lake Possum Kingdom.

## Terrain

The terrain consists of big rolling hills with excellent cover for wildlife and scenic views. Primary post oak, live oak red oak and blackjack oak with some mesquites and a good mix of browse for deer and excellent native grasses

## Improvements

Roads are in good condition and electricity enters the property. There is a set of working pens near the Burwick road entrance.

## Water

There are two ponds and many creeks. There is a sizable drainage that is ideal for building a 10± acre lake.

## Game

Great hunting opportunities. Wildlife consists of whitetail deer, lots of turkey, wild hogs, ducks and dove.

## Minerals

The seller does not own any minerals; there is no oil or gas production.

## Comments

This ranch is a deal! Includes beautiful sunsets, scenic views, and lots of game.

## Price

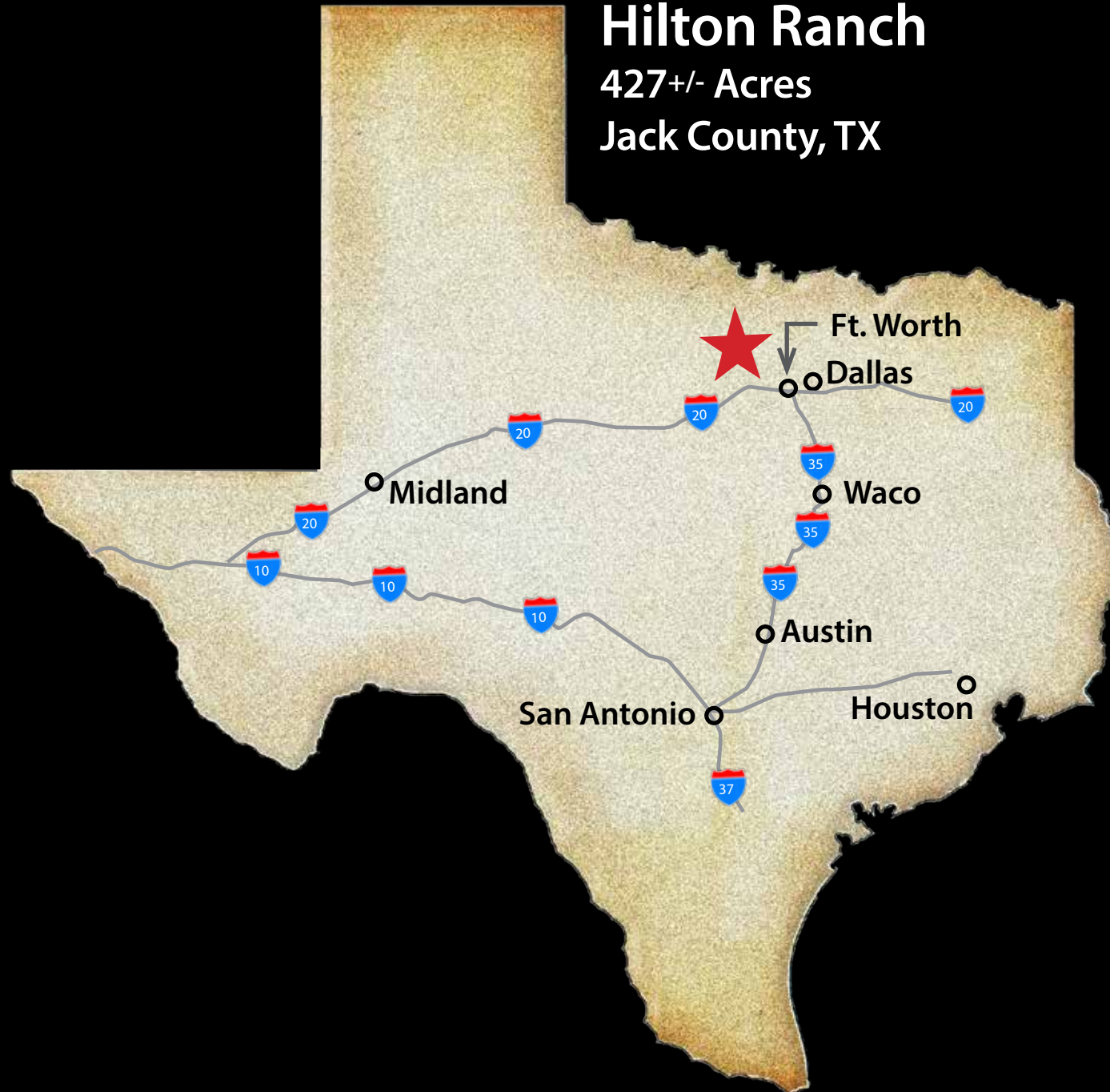
Contact broker for price.



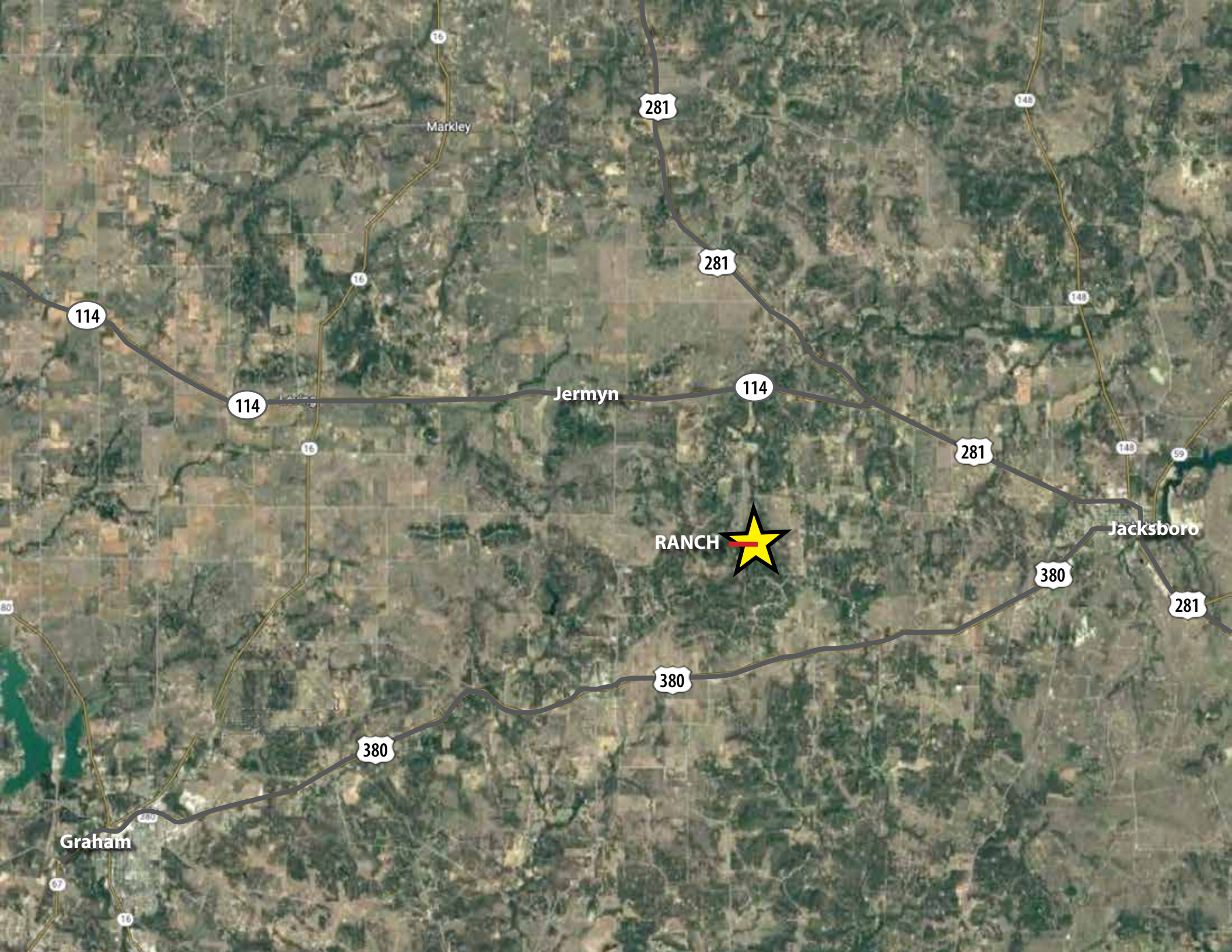
# Hilton Ranch

427+/- Acres

Jack County, TX







Markley

281

148

281

148

114

114

16

Jermyn

114

281

148

59

RANCH

Jacksboro

380

281

380

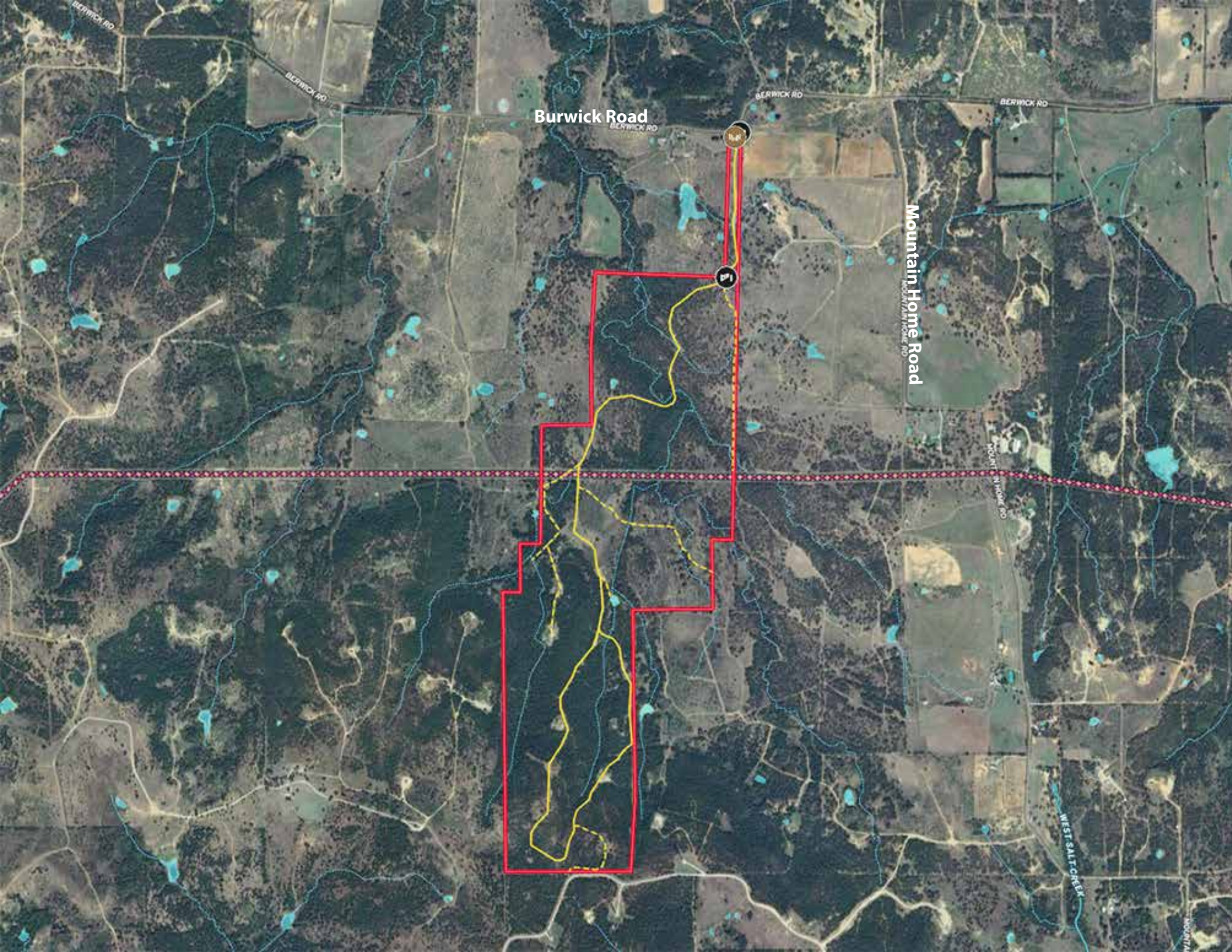
380

Graham

67

16





Burwick Road

Mountain Home Road

West Salt Creek

1





**Cattle Working Pens with Chute**

















**Good Perimeter Fencing**









**Transmission Lines Create Excellent Sendero for Hunting**









**Excellent Road System Throughout the Ranch**

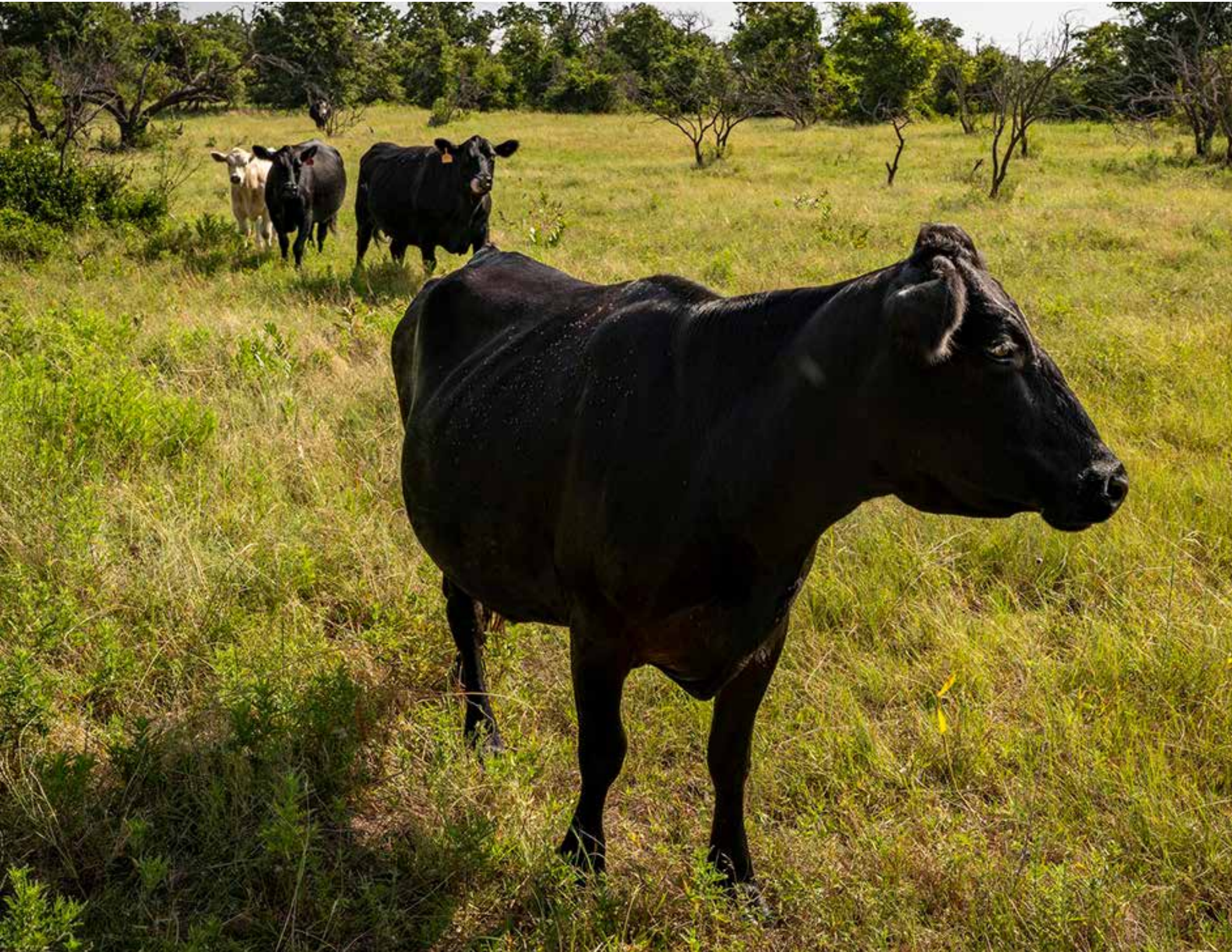
























**Huge Moss Covered Rocks**





**Many Seasonal Creeks Throughout the Property**





All information contained hereon has been obtained from sources deemed reliable. No representation or warranties, either expressed or implied are made as to its accuracy by seller or seller's agents. This information is subject to changes, withdrawal, error, omission, correction, or prior sale without notice.

Seller can receive and accept backup contracts.